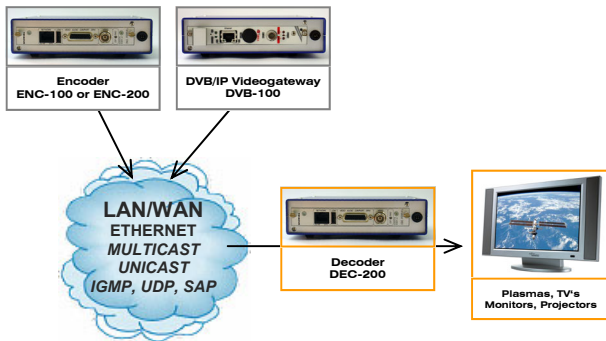


The DEC real-time decoder series is Teracue's direct answer and counterpart to the ENC real-time encoder series.

The DEC-200 is a compact, low cost H.264 SD and MPEG-2 SD video/audio stream receiver and decoding appliance.

It is designed for LAN and intranet network video applications. As an output point for streaming media, it provides easy access to professional DVB/DVD-quality streams.

Decode streams with the DEC-200 to provide networking video and audio on standard TV's, LCD's, plasmas, monitors and on projectors.



A high-quality network "video/audio port"

The DEC-200 provides versatile video/audio output in one simple and low-cost solution. Video-over-IP reception and DVB/DVD-quality processing of both H.264 and MPEG-2 SD streams are supported by the compact, flexible, yet robust and highly supportable DEC-200 'blade-based' appliance.

Easy to install and use

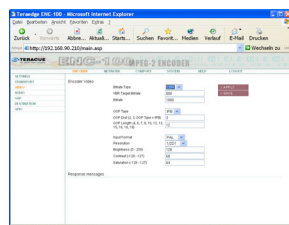
Installing and operating the DEC-200 is quick and simple: Connect LAN Ethernet and a display device and the DEC-200 decoder blade becomes a true video networking "port". It is able to receive streams that are present on your network and to deliver them in full DVD-quality video to connected TV's, monitors, plasmas, projectors - simply any kind of display.

When combined with the ENC encoder series or the DVB/IP videogateways the DEC-200 becomes part of a comprehensive real-time LIVE video transmission, collaboration, contribution, trunking, monitoring or publishing system.

Simple setup and maintenance

Configure and control through any standard web browser, no special tools required. Access the administrative interface and decoder configuration directly from your PC web browser to configure and start using the DEC-200. Full control via an intuitive graphical user interface.

Setup the reception stream address, output format, video decoding settings and much more with a couple of clicks.



The DEC-200 real-time decoder blades are robust 24/7 LIVE stream decoders for all types of operating conditions.

This decoder series consists of two different blade output models: DEC-200-VID supports RGB, Component, S-Video and Composite. DEC-200-SDI with SDI output and embedded audio support.

All DEC-200 decoder blades process input streams in full DVB/DVD-quality for professional output on any kind of display device.

DEC-200 combines high-performance with unparalleled simplicity in a compact Ethernet video decoding appliance designed for commercial, institutional, and industrial applications such as:

- **Broadcast/TV Distribution over IP**
- **IPTV/Confidence Monitoring**
- **Security/Surveillance/Monitoring/Public Safety**
- **Medical/Corporate/Military/Industrial Training**
- **Education/Distance Learning/Tele-Teaching**
- **Finance/Brokerage Television**
- **Legal/Legislative Communications**
- **Manufacturing/Process Monitoring**
- **Hospitals/Clinics/Telemedicine**
- **News/Sports/Advertising Agencies – Air/Rail station advertising**

Incredibly flexible

Use the DEC-200 for LIVE video networking applications. Place the DEC-200 anywhere on the network to facilitate DVD-quality video viewing of camera signals, TV channels, monitoring feeds or any other standard H.264 SD and MPEG-2 SD streaming video and audio source on the network.

TALKBACK audio conferencing, integrated COM server and GPIO

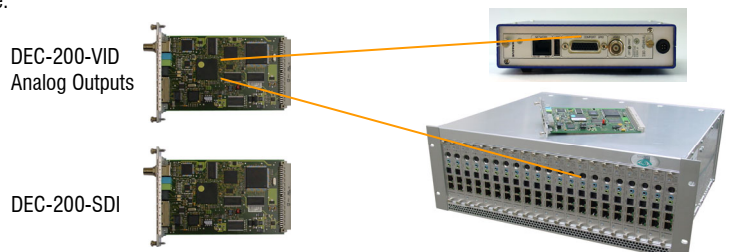
The DEC-200 supports TALKBACK. This allows audio conferencing between ENC encoder and DEC decoder series. Additionally remote control of peripheral serial equipment through it's integrated RS-232/485 port. The GPIO interface enables basic remote control of the DEC-200, e.g. turning decoding/video processing on/off, by a light sensor or foot switch.

Extremely robust and durable

The DEC-200 runs on an embedded Linux platform. This blade is designed without any moving parts, as hard drives/fans, to ensure system uptime, reliability and noiseless operation. The DEC-200 can be used in extreme operating conditions and at temperatures up to max. 60° C.

Blade based operation

The DEC-200 blades are operated inside the FR chassis series. Blades can be used in a single channel chassis (FR-110, as shown above) or in the FR-210 dual channel chassis. High-density requirements are solved by operating the DEC blades in the FR-2000 multi-channel rack, which can hold up to max. 21 Teracue blades. Different types of DEC decoder blades, ENC encoder blades and DVB/IP videogateways can be "mixed and matched" in the FR-2000 frame.



DEC-200 Technical Data

The DEC-200 is used for streaming applications and scenarios that take place at the edge of a network. The DEC-200 series H.264 SD and MPEG-2 SD decoder is designed as a video and audio output for professional IP video solutions. The DEC-200 is a blade based decoder and can be operated in either single or dual channel chassis' and in multi-channel rack frame configurations.

DEC-200 MODELS

DEC-200-VID	H.264 SD and MPEG-2 SD decoder blade with analog video output
DEC-200-SDI	H.264 SD and MPEG-2 SD decoder blade with SDI output, embedded audio supported

Every DEC model is delivered with one BREAK-OUT cable. Two options are available. Please specify upon order:
A - RGB, Sync, YP_BP_R, YC, CVBS, Genlock, AES-3id (all BNC), Audio Out /In (RCA plug), GPI in/out (Sub D 9pin), RS-232/485 (Sub D 9pin)
B - RGB, Sync, YP_BP_R, YC, CVBS, Audio Out (all RCA plug), Audio In (3.5 mm stereo jack plug)

DECODING SPECIFICATIONS

Standards	PAL, NTSC
Video Outputs	Dependent on DEC-200 model: Composite: 1 V _{PP} , 75 Ohm (BNC) SDI Output: 0,8 V _{PP} , 75 Ohm (BNC , embedded audio support)
	Break-out cable outputs: Composite: 1 V _{PP} , 75 Ohm S-Video: 1 V _{PP} (Y), 0,3 V _{PP} (C - Pal), 0,286 V _{PP} (C - NTSC), 75 Ohm Component: 1 V _{PP} (Y), 0,7 V _{PP} (P _B P _R) , 75 Ohm RGB: 0,7 V _{PP} , 75 Ohm, Sync: 0,3 V _{PP} Genlock: Blackburst 0,3 V _{PP} , 75 Ohm
Video Output Resolutions	Full D1: 720h x 480/576v, Half-D1: 352h x 480/576v, CIF/SIF: 360/384h x 288/240v, QCIF: 176h x 144/120v
Audio Outputs	Unbalanced Analog Stereo, Consumer Line level, RCA plug AES-3id, BNC, 75 Ohm, 1 V _{PP} , Unbalanced
Audio Inputs (Talkback)	Analog Stereo, Consumer Line level, 3.5 mm stereo jack plug or RCA plug
Video Codecs	MPEG-2 (ISO/IEC 13818-2), Main Profile at Main Level (MP@ML), 4:2:0 MPEG-4 AVC / H.264 (ISO/IEC 14496-10), Main Profile at Level 3.1 (MP@L3), Baseline Profile at Level 3.1 (BP@L3), 4:2:0
Stream types	ISO/IEC 13818-1 Transport & Program Streams Elementary A/V
Audio Codecs	MPEG-1 Audio Layer 1, 2 (ISO/IEC 11172-3 Layer 1, 2) MPEG-4 AAC LC (ISO/IEC 14496-3)

I/O SPECIFICATIONS

Network	10/100TX Ethernet, RJ45, half/full duplex, Auto-sensing
Streaming traffic	Unicast and Multicast traffic supported
IP Protocols	HTTP (Web Browser), TCP/IP Control Protocol, UDP/IP Streaming, IGMPv3, Supports SAPv2, SNMP, RTP, RTCP, RTSP, DHCP
RS-232/485 port	Remote control for non IP devices via TCP/IP RS-232/485 command tunnelling
GPI in	1 INPUT, for device control: Streaming on/off configuration
GPI out	1 OUTPUT, for switching peripheral devices on/off

ENVIRONMENTAL

Agency Approvals	CE, RoHS compliant
Humidity	Up to 90%, non-condensing
Temperature	0 to +60°C environment temperature; fanless when operated in FR-110 or FR-210 frames
Weight	Approx. 160 grams
Blade dimensions (H/W/D)	20mm x 130mm x 190mm
Power	5W per blade
Limited Warranty	1 year standard limited warranty. Warranty extensions available.

***PLEASE NOTE: Live streaming/Multicast Streaming requires specially designed and configured networks.
Minimum Requirements include: Layer-3 Switched Ethernet, Multicast Enabled, IGMPv2/3, Network and Multicast Routing Supported.



Schlossstr. 18
85235 Odelzhausen
Germany
Tel. +49 (0)8134 555 10
info@teracue.com
www.teracue.com